

Distributed Control Solutions (DCS)

Increasing Operating Efficiency

Process Solutions Canada Ltd. was founded on control and automation expertise. For more than 15 years, we have provided distributed control systems for a range of applications. From conceptual design to operational personnel training, we provide partnered solutions, creating long-term relationships with our customers. From first contact through continued support, we keep our customers informed.

Plant capital equipment is generally considered a major company asset; lately, however, process data is also being acknowledged as an irreplaceable asset.



UNISON® Control Room

Platform

Our distributed control system (DCS) runs on standard industrial computers. Customers have chosen to acquire their own hardware or to include it as part of the control solution.

Process Monitoring

Our commitment is providing technology that enables the analysis of process disruptions. Customers have successfully used our tools to prevent repeat plant shutdowns. Operators continually comment on the usefulness of the ability to step back in time through the screens and examine upset conditions and process variables. Trending provides another representation of historical data, and an archive server allows for the retention and recovery of older data. The historical data works with all applications, and compression techniques maximize storage.

UNISON® PCM

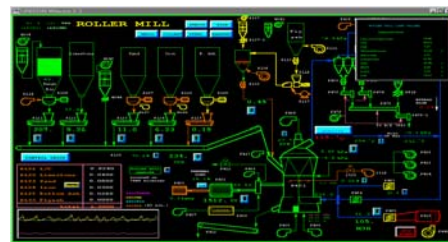
The Process Control Module (PCM) provides a full function control package. The PCM utilizes standard Input/Output gear from manufacturers, such as Allen Bradley, Modicon and Siemens. Running on standard industrial hardware, the PCM runs multiple interlock modules compiled with Boolean style programming. With an on-line database and on-line historical diagnostics, our PCM is an integral part of our DCS.

Intelligent Alarming

A PCM provides the basis for the generation of intelligent alarming. Equipment alarms are filtered by the state of the process, so only truly meaningful alarms appear in the alarm summary during both normal operation and process upset. The alarm system supports voice, alphanumeric paging, and extensive alarm based task triggering.

Operator Interface

The operator interface runs on standard hardware in a Microsoft® Windows™ environment.* A simplified interface means the operator does not have to work with multiple layered windows. Controls can be as easy as point and click, providing a fast response to the control system. Programmable keys reduce the number of operator keystrokes, and a one-second-response time, from operator-initiated action, to the display of modified field data, can be obtained.



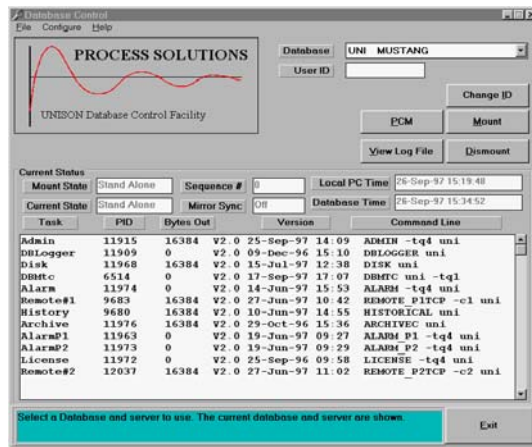
UNISON® WinCon Console

* PSCL Windows applications are tested with current versions of Windows at time of release; however, we do not guarantee full functional compatibility with all Windows versions.
© Process Solutions Canada Limited
Microsoft, Windows, Win32 and SQL Server are either registered trademarks or trademarks of Microsoft Corporation in the USA and other countries. Oracle is a registered trademark of Oracle Corporation. All other brand and product names are trademarks or registered trademarks of their respective holders and are indicated as such.



Utilities and Diagnostics

A full suite of utilities and diagnostics tools are available to aid in the management and operations of the system. Management access to data, multi-line trending, database control utilities, group start, interlock query, reporting tools, rack view, diagnostic messaging, alarm searching and display, and a programming library are provided with a UNISON® DCS system.



UNISON Database Control Facility

Customer Assurance and Support

Process Solutions' background is the Cement Industry. This is important, as it means that we understand the needs, issues and working environment of the industry.

We work with you to design and/or customize your solution, and to install, implement and maintain the necessary hardware and software. This process typically includes on site time to survey the site and confirm requirements before detailed planning and implementation start.

We offer a full 12-month warranty on all of our solutions, and provide customized ongoing maintenance and support agreements. Our Customer Care group carries out on-site installations, and provides full-time Help Desk support.

Most importantly, we aim to establish client partnerships for the long term. We develop on-

going working relationships that will enable you to get the most from your existing solution(s), and at the same time help us to further develop our portfolio by understanding and satisfying your needs.

We are continually updating and improving our core technologies. Relying on user feedback makes our software better suited to the cement industry, and all of our software is tailored to your individual requirements.

Summary

A UNISON distribution control solution from Process Solutions can assist in increasing operating efficiency, reducing and, often, eliminating causes of shutdowns; improving cement quality, and improving the rate of return for your facility.

If you would like to discuss this solution with us, please contact:

David Rogers

Telephone: (780) 452-2227, ext. 5250

E-mail: david.rogers@pscl.com

Visit our web site at www.pscl.com

* PSCL Windows applications are tested with current versions of Windows at time of release; however, we do not guarantee full functional compatibility with all Windows versions.

© Process Solutions Canada Limited

Microsoft, Windows, Win32 and SQL Server are either registered trademarks or trademarks of Microsoft Corporation in the USA and other countries. Oracle is a registered trademark of Oracle Corporation. All other brand and product names are trademarks or registered trademarks of their respective holders and are indicated as such.